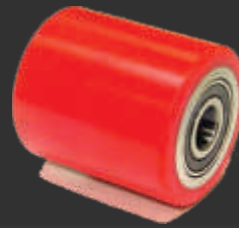




# Zeal India



Pataudi Road, Near Ashish Vatika, Gurugram - 122 001 (Haryana)  
Mob.: 9810265841, 8527109900 | E-mail : [zealindiaggn@gmail.com](mailto:zealindiaggn@gmail.com)

[www.zealindiacaster.com](http://www.zealindiacaster.com)



**Ball Castors**  
 (Nickel Chrome Plated) Double Ball bearing in Rubber/PVC Ball etc.  
 Dia :- 37 mm to 75 mm

Type : Plate/Bush/Pillar 5/8, 7/8/Kingpin/Threaded Pin.

Code: 2501



**Ball Castors**  
 (Nickel Chrome Plated) Double Ball bearing in Rubber/PVC Ball etc.  
 Dia :- 37 mm to 75 mm

Type : Plate/Bush/Pillar 5/8, 7/8/Kingpin/Threaded Pin.

Code: 2502



**Wheel Castors**  
 (Zinc Plated) Rubotech Steel Pressed Double Ball bearing in Rubber/PVC/ C.I./Disc wheel.  
 Dia :- 27 mm to 100 mm

Type : Plate/Bush/Pillar 5/8, 7/8, 9/8, Kingpin/Thread Pin.

Code: 2601



**Polymer Wheels**  
 only to suit the industries application, Railway Platforms & heavy works in Mines, Quarries etc.  
 Dia :- 25 mm to 300 mm

Type : Polymer Width : 1.5" to 3.5"

Code: 3001



**Wheel Castors heavy Duty**  
 (Zinc Plated) Steel Pressed Double Ball bearing in Rubber/Nylon/ polymer/C.I./Disc wheel.  
 Dia :- 100 mm to 200 mm

Type : Plate/Pillar/Threaded/Fix.  
 Also available in Break.

Code: 2602



**Rubber Tyres**  
 only to suit the application of Rehri etc.  
 Dia :- 150 mm to 300 mm

Type : Rubber Width : 1.5" to 3.5"

Code: 2904



**Wheel Castors heavy Duty**  
 (Zinc Plated) Steel Pressed Double Ball bearing in Rubber/Nylon/ polymer/C.I./Disc wheel.  
 Dia :- 100 mm to 200 mm

Type : Plate/Pillar/Threaded/Fix.  
 Also available in Break.

Code: 2603



**Invalid Chair Tyre**  
 to suit the Wheel Chair in Hospital etc.  
 Dia :- 600 mm to 650 mm

Width : 37 mm

Code: 3201



**Wheel Castors heavy Duty**  
 (Zinc Plated) Steel Pressed Double Ball bearing in Rubber/Nylon/ polymer/C.I./Disc wheel.  
 Dia :- 100 mm to 200 mm

Type : Fix

Code: 2604



**Trolley Wheel**  
 fitted with Rubber Tire in nylon Disc  
 Dia :- 50 mm to 300 mm

Width : 1.0" to 3.5"

Code: 2905



**Nylon Wheels**  
to suit the application of Steel Furniture, Cooler etc.  
**Dia :- 25 mm to 100 mm**  
**Type : H.D. Width : 1" to 2"**

**Code: 2606**



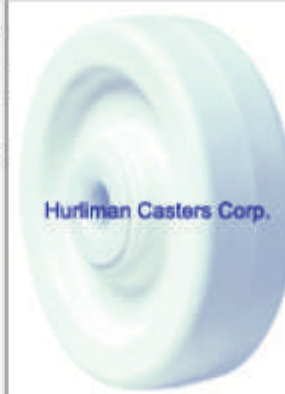
**Trolley Wheel**  
fitted with Rubber Tyre in MS Disc/C.I. Disc/Zinc Plated Disc.  
**Dia :- 150 mm to 300 mm**  
**Width : 1.5" to 3.5"**

**Code: 2906**



**Deluxe Castor**  
(Pressure Die Casting) Godrej type.  
**Dia :- 25 mm to 50 mm**  
**Type : Plate/Pillar/Threaded**

**Code: 2701**



**Heavy Duty Nylon Wheel**  
superior than polymer wheel used in industries, mine, Railway & for heavy works  
**Dia :- 100 mm to 300 mm**  
**Type : Nylon Width : 1" to 3.5"**

**Code: 3401**



**Twin Wheel Castor**  
In Nylon Body.  
**Dia :- 25 mm to 50 mm**  
**Type : Plate/Pillar/Threaded**

**Code: 2801**



**Forged Castor**  
heavy duty for heavy duty for heavy load in trolleys for industries.  
**Dia:- 4" to 12"**  
**Width : 2" to 4"**  
**Type Forged swivel/Fix**

**Code: 3501**



**Rubber Wheel**  
made from good quality Rubber to Suit the application of wheel.  
**Dia :- 25 mm to 150 mm**  
**Type : knob iron /Nylon, Width: 1/2" to 2"**

**Code: 2901**



**Polyurethane wheel**  
with good abrasion resistance to suit all application.  
**Dia :- 2" to 8"**  
**Type : On Nylon Garl**

**Code: 3601**



**Rubber Wheel Heavy Duty**  
to take extra load as mounted on Iron Gararl.  
**Dia :- 100 mm to 400 mm**  
**Type : On Iron Gararl, Width: 1" to 4"**

**Code: 2902**



**Rivo type Castor**  
( Zinc Plated) steel pressed in double ball bearing in Rubber, Nylon & C.I.  
**Dia :- 25 mm to 100 mm**  
**Type : Plate/Bush/Pillar/Threaded Pin**

**Code: 3701**

 <p>Hurliman Casters Corp.</p>	<p><b>Rubber Wheel Medium Duty</b> to suit application for Hospital &amp; Furniture. <b>Dia :- 75 mm to 200 mm</b></p> <p><b>Type : On Plastic Garari, Width: 1" to 2"</b></p>		<p><b>C.I. Wheel</b> (Cast Iron) for Heavy Load <b>Dia :- 1" to 16"</b></p>
<p><b>Code: 2605</b></p>		<p><b>Code: 3801</b></p>	
	<p><b>Fabricated casters</b> for Industrial application in Rubber/Nylon/ polymer/C.I./Disc wheel.</p> <p><b>Dia:- 4" to 12"</b></p> <p><b>Width : 2" to 4"</b></p> <p><b>Type :swivel / Fix</b></p>	 <p>hurliman casters corp</p>	<p><b>Polyurethane wheel</b> with good abrasion resistance to suit all application. <b>Width:- 25 mm to 100 mm</b> <b>Dia :- 4" to 20"</b></p> <p><b>Type : On C.I. Garari</b></p>
<p><b>Code: 3101</b></p>		<p><b>Code: 3602</b></p>	
	<p><b>Hydraulic Hose</b> <b>Industrial Hose</b> for Industrial application Rubber/PVC/Thermoplast Hose</p> <p><b>Hose ID: 6mm to 100mm</b></p>		<p><b>Scaffolding Caster</b> for Construction &amp; Building Maintenance</p> <p><b>Dia: 6" to 8"</b> <b>Width: 2"</b> <b>Type: Swivel</b></p>
<p><b>Hydraulic Hose</b></p>		<p><b>Code: 3901</b></p>	
	<p><b>Spring Loaded Caster</b> for Industrial Trolley</p> <p><b>Dia: 4", 6" to 8"</b> <b>Width: 2"</b> <b>Type: Swivel / Fix</b></p>		<p><b>Leveling Caster</b></p> <p><b>Model: 60, 80, 100</b> <b>Type: Swivel</b></p>
<p><b>Code: 4001</b></p>		<p><b>Code: 4101</b></p>	
	<p><b>Rubber Sheet</b> for Industrial Trolley, Flooring Purpose &amp; Electrical Panel</p> <p><b>Size: 1mm to 50mm</b></p>		<p><b>PVC Tube/Braided Hose</b> for Industrial Trolley &amp; Garden Purpose</p> <p><b>Size: 6mm to 50mm</b></p>
<p><b>Rubber Sheet</b></p>		<p><b>PVC Tube/Braided Hose</b></p>	

Pataudi Road, Near Ashish Vatika, Gurugram-122001 (HR.)  
Mob.: 9810265841, 8527109900 | E-mail: zealindiaggn@gmail.com

[www.zealindiacaster.com](http://www.zealindiacaster.com)